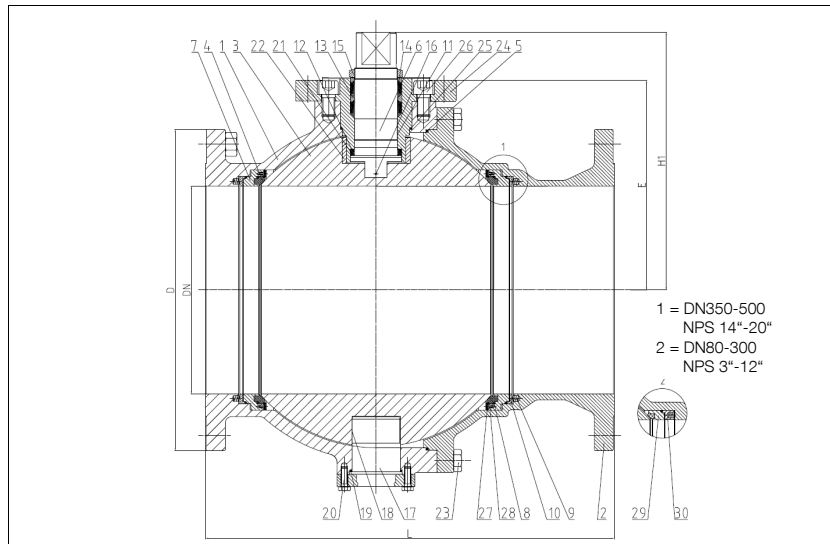


BALL VALVES INTEC

K214, DN300 - DN500, PN16/40
trunnion mounted ball, PEEK seated,
both sides spring loaded seat rings



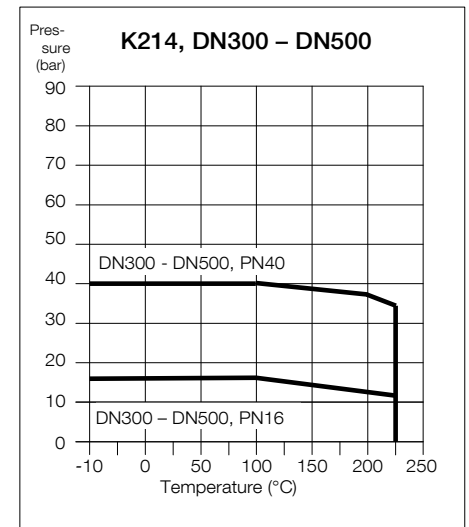
Flanged ball valve
full bore
face to face acc. to EN 558, GR.27
face to face acc. to EN 1092

Specification:

Two-piece ball valve acc. to EN 1092, face to face dimensions acc. to EN 558, GR.27, full bore, blow-out-proof stem, body material stainless steel (1.4408) or carbon steel (1.0619), antistatic device, free of non ferrous metals, trunnion mounted ball, seats full chambered, stem packing Graphite/KFGN/KFAM cone ring system dynamic loaded adjustable, top flange DIN EN ISO 5211, approved by PED, certified acc. to GERMAN clean air acr VDI 2440.

Marking: INTEC K214

No.	Part	Material	Material
Standard design			
1	body	1.0619	1.4408
2	cap	1.0619	1.4408
3	ball		1.4408
4	seat		PEEK
5	body seal		KF
6	stem		1.4462
7	seat bearing ring	1.4571/1.4404	
8	seat seal		KF
9	spiral spring		1.4401
10	follower ring	1.4571/1.4404	
11	stem bearing	1.4401/KF	
12	below seal	KFGN/Graphite	
13	upper seal	KFAM/Graphite	
14	bearing		PEEK
15	hex. nut self-locking		A2/1.4301
16	antistatic element	1.4401/1.4571/1.4404	
17	trunnion	1.4571/1.4404	
18	bearing	1.4401/KF	
19	trunnion seal		KF
20	hex. screw		A4-70
21	friction washer		PEEK
22	ball bearing		PEEK
23	hex. screw		A4-70
24	stuffing box	1.4571/1.4404	
25	stuffing box seal		KF
26	allen screw		A4-70
27	stop plate	1.4571/1.4404	
28	countersunk screw		A4-70
29	seat bearing ring	1.4571/1.4404	
30	spring washer	1.4571/1.4404	
Fire-Safe design			
5	combined body seal		KF-Graphite
8	seat seal		Graphite
9	spiral spring		Inconel X750
11	Fire-Safe seal		Graphite
	ring	1.4571/1.4404	
19	thrust washer		PEEK
	trunnion seal		Graphite
25	stuffing box seal		KF-Graphite



Ordering example:
INTEC K214, DN400, PN40,
GR. 27, 1.4408, Fire-Safe

Dimensions

DN mm	PN	dimensions (mm)				top flange ISO	torque Nm *	ca. weight kg
		L	D	E	H1			
300	16	500	460	311	400	F16	1789**	343
300	40	500	515	311	400	F16/F25	4226**	380
350	16	550	520	350	439	F25	2711**	505
350	40	550	580	350	439	F25	6270**	615
400	16	762	580	388.5	477.5	F25-F30	3496**	692
400	40	762	660	388.5	477.5	F25-F30	8106**	772
500	16	914	715	485	589	F25-F30	6394**	1363
500	40	914	755	485	589	F30/F35	15076**	1438

* Necessary torque measured with treated water at Δ P acc. to pressure class and room temperature.

** gearbox recommended

Other flange connections and materials on request.

Subject to technical modification. 10/2019